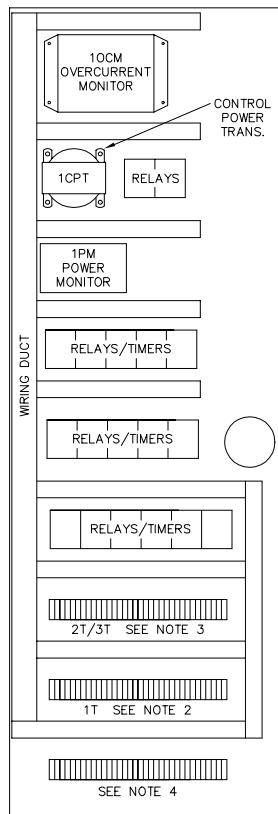
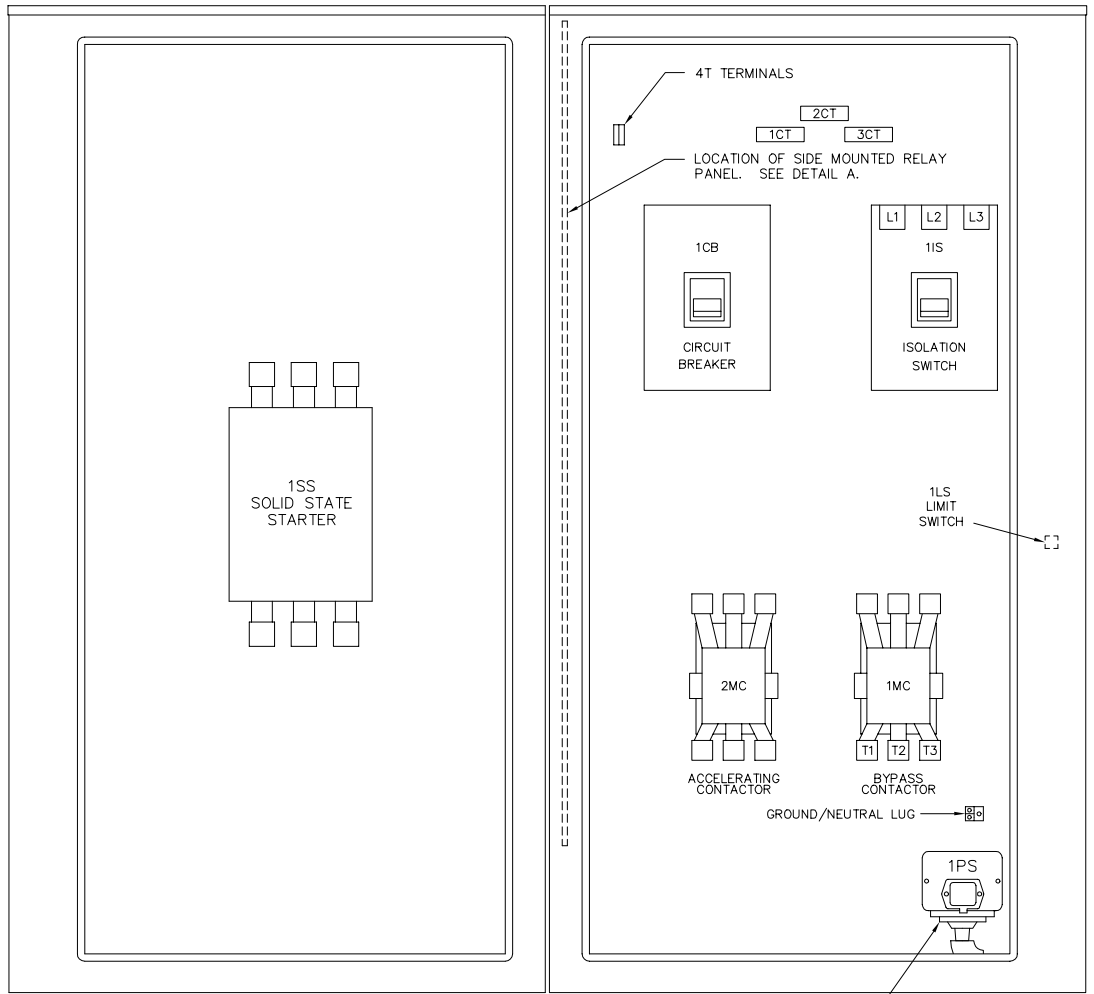


1T\*  
FIELD  
TERMINALS

- |    |    |   |
|----|----|---|
| 1  | 1  | } N.O. CONTACT. OPENS ON LOSS OF CONTROLLER POWER   |
| 2  | 2  |   |
| 3  | 3  | } N.C. CONTACT. CLOSSES ON LOSS OF CONTROLLER POWER |
| 4  | 4  |   |
| 5  | 5  | } N.O. CONTACT. CLOSSES WHEN PUMP RUNNING           |
| 6  | 6  |   |
| 7  | 7  | } N.C. CONTACT. OPENS WHEN PUMP RUNNING             |
| 8  | 8  |   |
| 9  | 9  | } REMOTE START. PUMP WILL START WHEN SWITCH CLOSSES |
| 10 | 10 |   |
| 11 |    |   |
| 12 |    |   |
| 13 |    |   |
| 14 |    |   |
| 15 |    |   |
| 16 |    |   |
| 17 |    |   |
| 18 | 18 | } N.O. CONTACT. CLOSSES ON PHASE REVERSAL           |
| 19 | 19 |   |
| 20 | 20 | } N.C. CONTACT. OPENS ON PHASE REVERSAL             |
| 21 | 21 |   |
| 22 | 22 | } N.O. CONTACT. OPENS ON MOTOR OVERLOAD             |
| 23 | 23 |   |



DETAIL A  
SIDE MOUNTED  
RELAY PANEL

- NOTES:
1. POWER MONITOR SIGNALS ANY OF THE FOLLOWING FAILURES:  
LOW VOLTAGE  
LOSS OF VOLTAGE  
PHASE REVERSAL
  - \*2. 1T FIELD TERMINALS ARE LOCATED AT BOTTOM OF SIDE MOUNTED RELAY PANEL. SEE DETAIL A
  3. 2T, 3T & MANUAL STOP JUMPER ARE LOCATED IN THIS AREA.
  4. EXTRA (OPTIONAL) TERMINALS ARE LOCATED IN THIS AREA.

	VOLTS AC					PRIMARY WIRE SIZE	
	200V	208V	220V - 240V	380V - 415V	440V - 480V	LINE TERMINAL WIRE SIZE PER PHASE	SERVICE ENTRANCE GROUND LUG WIRE SIZE
MAXIMUM MOTOR HORSEPOWER	250 HP	250 HP	250 HP	400 HP	500 HP	(2) #3/0-400 MCM	(2) #6-250 MCM
	300 HP	300 HP	300 HP	600 HP	700 HP	(2) #4/0-500 MCM	(2) #6-250 MCM

DRAWN	SR	5-22-98		<b>METRON, INC.</b> DENVER, CO.
CHECK	KH	5-22-98		
APPD	X.B.	5-22-98		
INTERNAL LAYOUT & EXTERNAL HOOKUP MODEL M700, SOFT START/STOP ELECTRIC FIRE PUMP CONTROLLER				
CH33043C				
SCALE N.T.S SHEET 1 OF 1				